

REFERENCE NO: 112829  
 TITLE CO: LAND AMERICA AMERICAN TITLE  
 BUILDER: BUESCHER HOMES  
 DATE: 12-26-06

CF# 1964001136A

PURCHASER: BERKHMIR

18' ALLEY

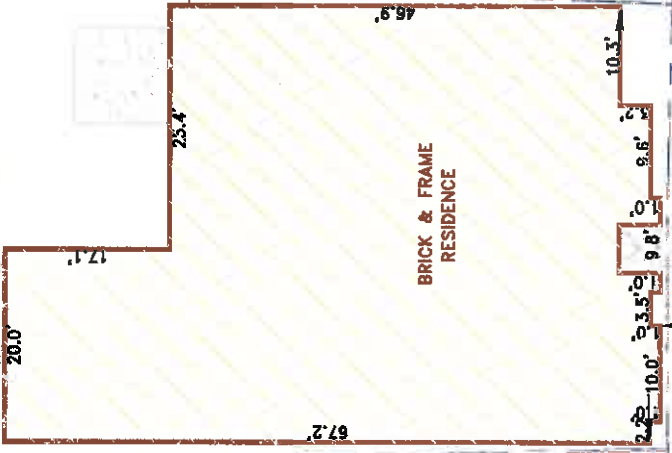
1/2" I.R. FND. 1/2" I.R. FND.

L=67.03'  
 R=954.00'

5' UTILITY EASEMENT W/884

LOT 15

20' BL



14  
 W/884

16  
 W/884

BRICK & FRAME  
 RESIDENCE

25' BUILDING  
 LINE

15' HIKE AND BIKE EASEMENT W/884

L=58.59'  
 R=834.00'

1/2" I.R. FND. 5/8" I.R. FND.

1380 PATCH GROVE DRIVE  
 (60' RIGHT-OF-WAY)

LEGEND

FENCE	TELEPHONE	ELECTRIC	CONTROL	MANUMENT
WOOD	STONE	TILE	CONCRETE	BRICK
				ASPHALT

NOTE: BASIS OF BEARINGS FOR THIS SURVEY FROM DATA PROVIDED BY THE RECORDED PLAT.

subject to restrictions:  
 5007/3301, D.R.D.C.T.

PROPERTY DESCRIPTION: Lot 15, Block W, Grayhawk Section II, Phase I, an Addition to the City of Frisco, Denton County, Texas, according to the Map or Plat thereof recorded in Cabinet W, Pages 884, of the Plat Records, of Denton County, Texas.

SURVEYOR'S STATEMENT:

The undersigned Registered Professional Land Surveyor has prepared this survey for the exclusive use of the herein named home builder and title company only. The aforementioned plat was prepared by the surveyor or under his supervision on the date shown hereon; this plat of survey and the property description set forth hereon are an accurate representation of facts found in the field on the ground survey; there are no visible, above ground monuments, or previous surveys, shown as shown. The use of this survey by any parties other than those named above for any other purposes shall be at the user's own risk and any loss resulting there from shall rest on the responsibility of the undersigned. Unauthorized use is not permitted without the express written permission of Dowdy Land Surveyors, Inc.

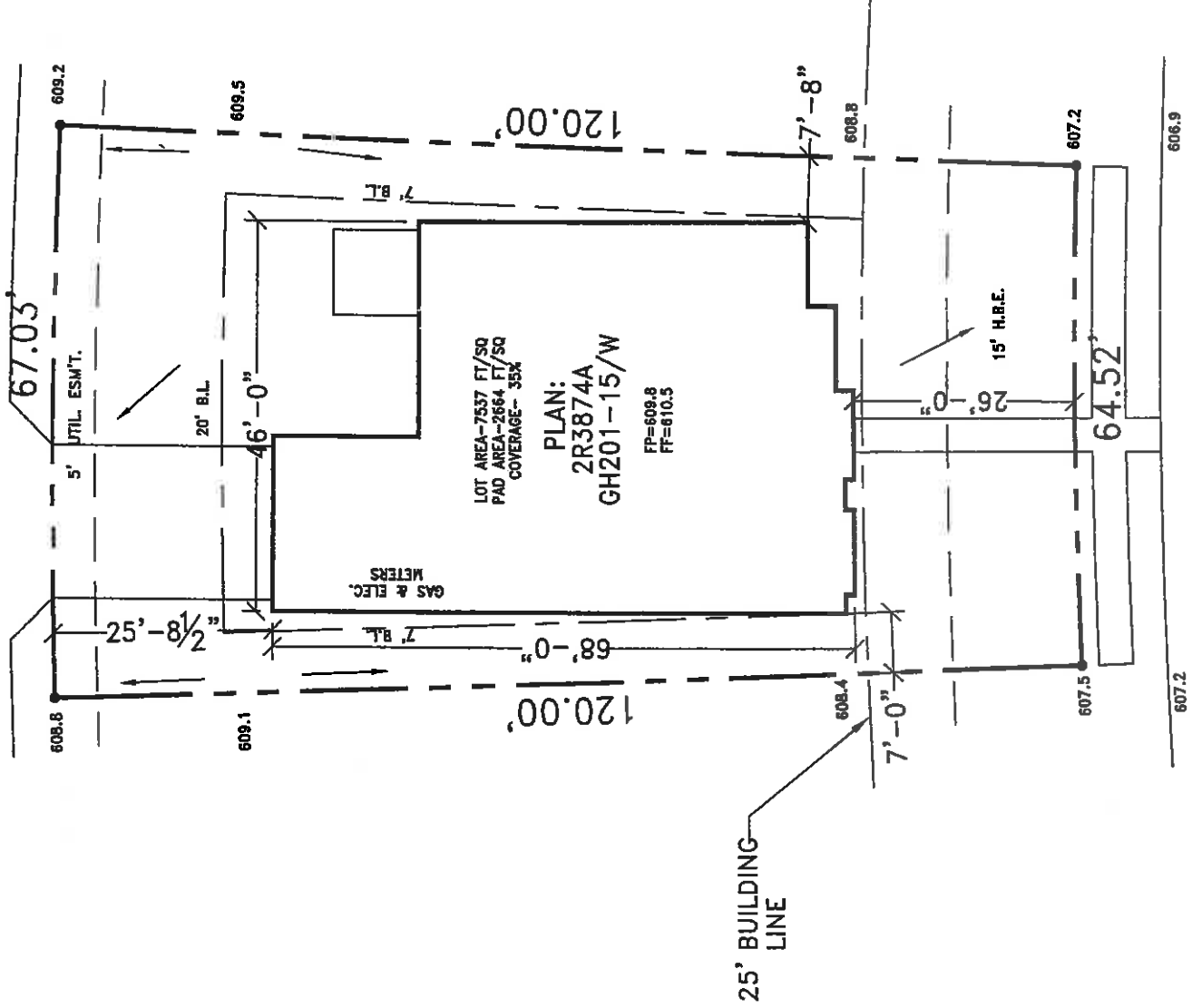


*Roland Rodriguez*  
 ROLAND RODRIGUEZ, R.P.L.S. NO. 4987  
 DOWDY LAND SURVEYORS, INC.  
 6850 MANHATTAN BLVD. SUITE 310  
 FORT WORTH, TEXAS 76120  
 (817) 429-9898

SCALE: 1"=20'

NOTE: THIS SITE PLAN IS FOR APPROVAL OF PROPOSED IMPROVEMENTS AND NOT TO BE CONFUSED WITH AN ACTUAL ON THE GROUND SURVEY CONDUCTED UNDER THE SUPERVISION OF A REGISTERED PROFESSIONAL LAND SURVEYOR.

MENT BY CITY BUILDING INSPECTIONS AND NOT TO BE CONFUSED WITH AN ACTUAL ON THE GROUND SURVEY CONDUCTED UNDER THE SUPERVISION OF A REGISTERED PROFESSIONAL LAND SURVEYOR.



X 3mb

1380 PATCH GROVE DRIVE  
LOT 15, BLOCK "W"  
GRAYHAWK SECTION II, PHASE I  
FRISCO, TEXAS

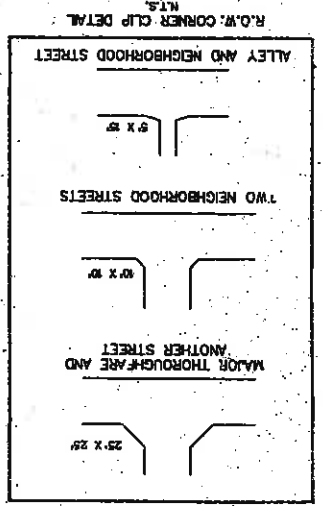


6/22/06

BUESCHER HOMES

FENCES: 117'  
SOD: 4640 FT/SQ  
CONC. 1040 FT/SQ

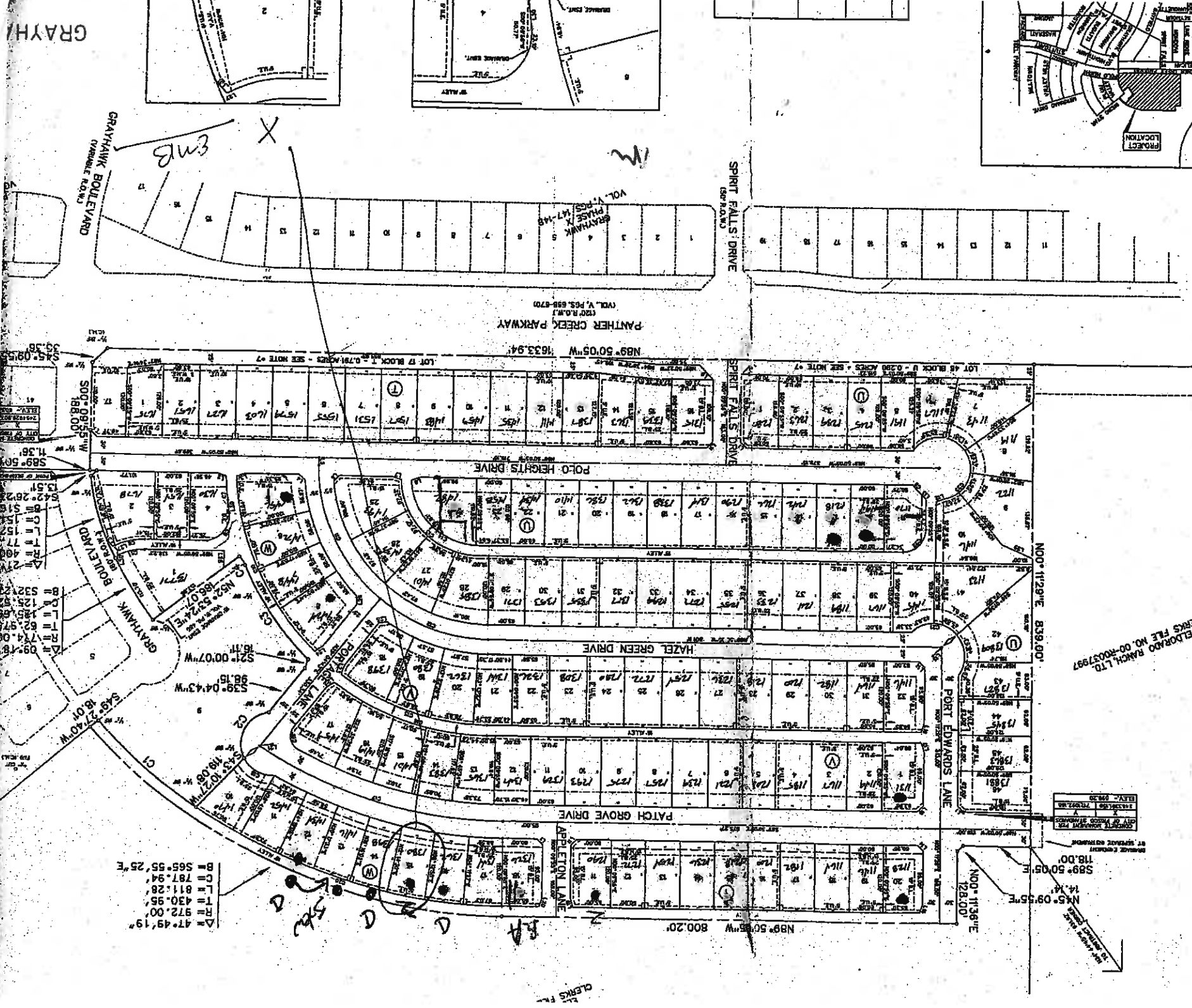
NOTES:  
 1. Bearings are referenced to Grayhawk Phases VI & VII as described in Volume U, Pages 753-755, in the Plat Records of Denton County, Texas.  
 2. 1/2" from roads with CORWIN ENGR. INC.'s set of boundary corners, block corners, points of curvature, points of tangency, and angle points in public right-of-way unless otherwise noted.  
 3. ☐ Indicates 10'x10' Electric Transformer Easement.



LINE TABLE

LINE NO.	BEARING	DISTANCE
1.	S 44°50'05"	14.14
2.	S 17°24'13"	15.91
3.	N 17°24'13"	15.91
4.	N 17°24'13"	14.53
5.	N 00°09'55"	13.00
6.	N 42°49'57"	13.60
7.	S 73°01'57"	15.62
8.	N 69°58'08"	16.22
9.	N 44°35'04"	35.20
10.	N 45°40'11"	35.67
11.	N 45°09'55"	14.14
12.	N 68°59'33"	16.09
13.	S 43°59'04"	21.54
14.	S 44°49'18"	14.14
15.	N 43°10'42"	21.22
16.	N 18°41'25"	15.81
17.	N 45°10'42"	15.15
18.	N 45°10'42"	15.81
19.	N 45°10'42"	15.81
20.	N 45°10'42"	15.81
21.	N 45°10'42"	15.81
22.	N 45°10'42"	15.81
23.	N 20°18'41"	15.54
24.	N 57°50'45"	15.54
25.	N 81°28'00"	14.83
26.	S 03°18'34"	14.83
27.	N 63°05'55"	4.13
28.	N 00°09'55"	30.25
29.	N 66°13'04"	58.10
30.	N 06°34'19"	23.22

3.	198.94	100.77	198.94
4.	17.76	9.12	17.76
5.	535.29	09.09	535.29
6.	517.02	02.32	45.41
7.	483.08	44.10	483.08
8.	43.00	72.60	43.00
9.	6.55	13.23	6.55
10.	445.00	344.75	445.00
11.	300.00	267.45	300.00
12.	300.00	203.75	300.00
13.	189.58	105.98	189.58
14.	192.64	192.64	192.64
15.	149.51	272.21	149.51
16.	443.51	287.98	443.51
17.	443.51	272.21	443.51
18.	443.51	272.21	443.51
19.	443.51	272.21	443.51
20.	443.51	272.21	443.51
21.	443.51	272.21	443.51
22.	443.51	272.21	443.51
23.	443.51	272.21	443.51
24.	443.51	272.21	443.51
25.	443.51	272.21	443.51
26.	443.51	272.21	443.51
27.	443.51	272.21	443.51
28.	443.51	272.21	443.51
29.	443.51	272.21	443.51
30.	443.51	272.21	443.51
31.	443.51	272.21	443.51
32.	443.51	272.21	443.51
33.	443.51	272.21	443.51
34.	443.51	272.21	443.51
35.	443.51	272.21	443.51
36.	443.51	272.21	443.51
37.	443.51	272.21	443.51
38.	443.51	272.21	443.51
39.	443.51	272.21	443.51
40.	443.51	272.21	443.51
41.	443.51	272.21	443.51
42.	443.51	272.21	443.51
43.	443.51	272.21	443.51
44.	443.51	272.21	443.51
45.	443.51	272.21	443.51
46.	443.51	272.21	443.51
47.	443.51	272.21	443.51
48.	443.51	272.21	443.51
49.	443.51	272.21	443.51
50.	443.51	272.21	443.51
51.	443.51	272.21	443.51
52.	443.51	272.21	443.51
53.	443.51	272.21	443.51
54.	443.51	272.21	443.51
55.	443.51	272.21	443.51
56.	443.51	272.21	443.51
57.	443.51	272.21	443.51
58.	443.51	272.21	443.51
59.	443.51	272.21	443.51
60.	443.51	272.21	443.51
61.	443.51	272.21	443.51
62.	443.51	272.21	443.51
63.	443.51	272.21	443.51
64.	443.51	272.21	443.51
65.	443.51	272.21	443.51
66.	443.51	272.21	443.51
67.	443.51	272.21	443.51
68.	443.51	272.21	443.51
69.	443.51	272.21	443.51
70.	443.51	272.21	443.51
71.	443.51	272.21	443.51
72.	443.51	272.21	443.51
73.	443.51	272.21	443.51
74.	443.51	272.21	443.51
75.	443.51	272.21	443.51
76.	443.51	272.21	443.51
77.	443.51	272.21	443.51
78.	443.51	272.21	443.51
79.	443.51	272.21	443.51
80.	443.51	272.21	443.51
81.	443.51	272.21	443.51
82.	443.51	272.21	443.51
83.	443.51	272.21	443.51
84.	443.51	272.21	443.51
85.	443.51	272.21	443.51
86.	443.51	272.21	443.51
87.	443.51	272.21	443.51
88.	443.51	272.21	443.51
89.	443.51	272.21	443.51
90.	443.51	272.21	443.51
91.	443.51	272.21	443.51
92.	443.51	272.21	443.51
93.	443.51	272.21	443.51
94.	443.51	272.21	443.51
95.	443.51	272.21	443.51
96.	443.51	272.21	443.51
97.	443.51	272.21	443.51
98.	443.51	272.21	443.51
99.	443.51	272.21	443.51
100.	443.51	272.21	443.51



A = 47°49'19"  
 R = 972.00'  
 L = 430.95'  
 C = 811.28'  
 B = 787.94'  
 B = 565.55' 25'E

GRAYHAWK