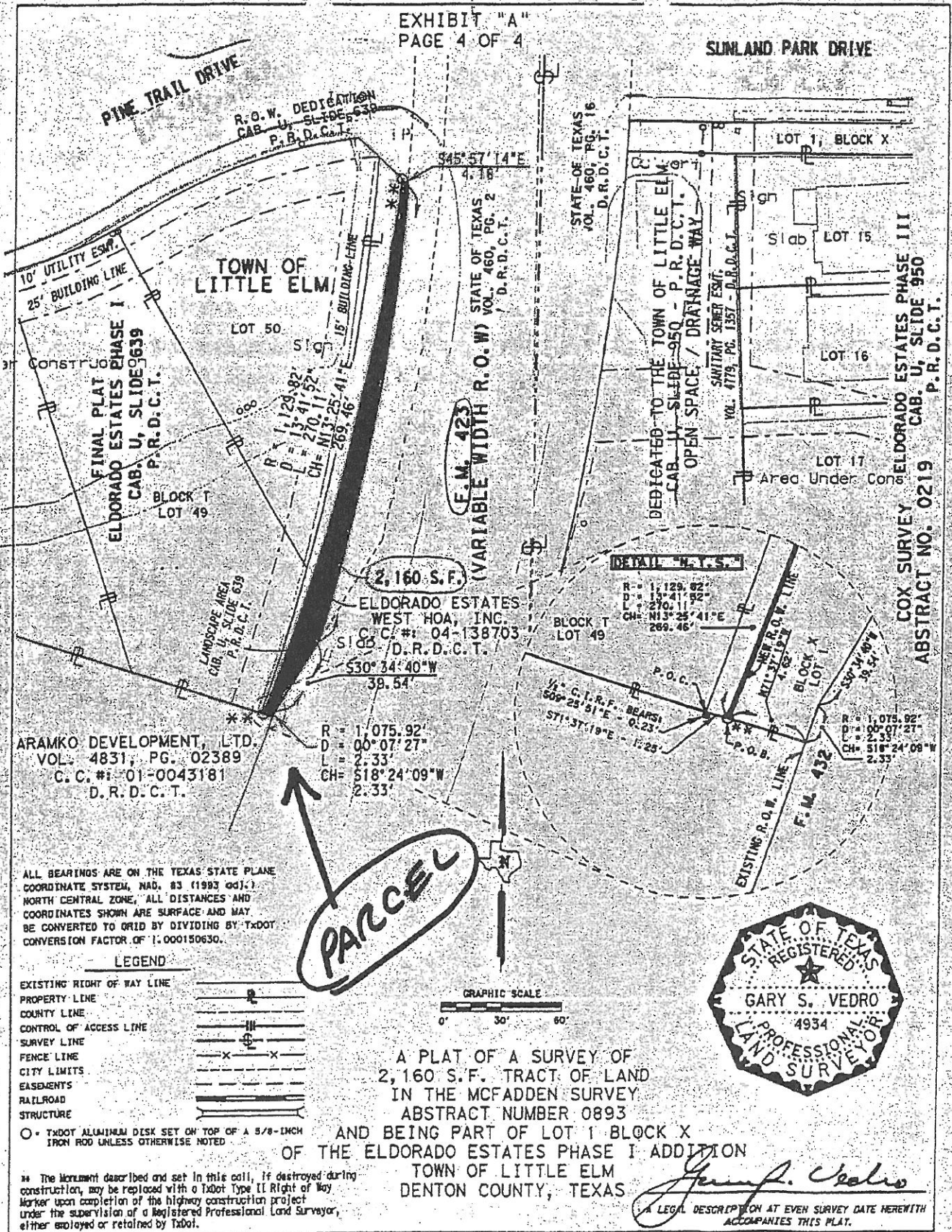


SUNLAND PARK DRIVE

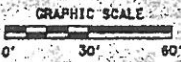


ALL BEARINGS ARE ON THE TEXAS STATE PLANE
COORDINATE SYSTEM, NAD, 83 (1993 ADJ.),
NORTH CENTRAL ZONE, ALL DISTANCES AND
COORDINATES SHOWN ARE SURFACE AND MAY
BE CONVERTED TO GRID BY DIVIDING BY TxDOT
CONVERSION FACTOR OF 1.000150630.

LEGEND

EXISTING RIGHT OF WAY LINE	
PROPERTY LINE	
COUNTY LINE	
CONTROL OF ACCESS LINE	
SURVEY LINE	
FENCE LINE	
CITY LIMITS	
EASEMENTS	
RAILROAD	
STRUCTURE	

○ TxDOT ALUMINUM DISK SET ON TOP OF A 5/8-INCH
IRON ROD UNLESS OTHERWISE NOTED



* The Monument described and set in this call, if destroyed during
construction, may be replaced with a TxDOT Type II Right of Way
Marker upon completion of the highway construction project
under the supervision of a Registered Professional Land Surveyor,
either employed or retained by TxDOT.