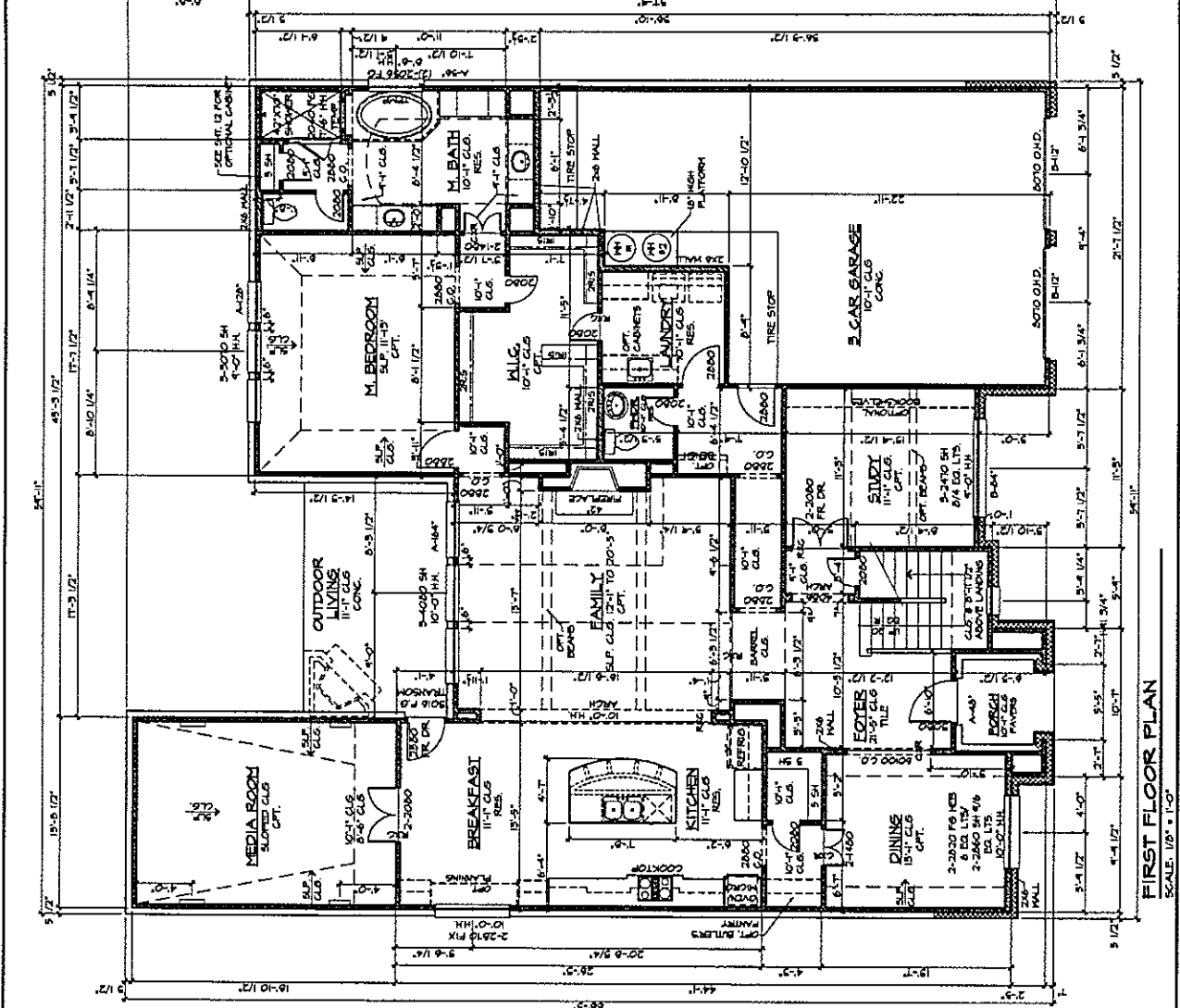


7481 LONGMONT COURT; JOB: 258-034



**LINEEL SCHEDULE**

MARK	SIZE
A	3' X 3' X 1/4"
B	5' X 3' X 1/4"
C	6' X 4' X 3/8"
D	8' X 4' X 1/2"
E	8' X 4' X 3/4"
F	8' X 4' X 1"

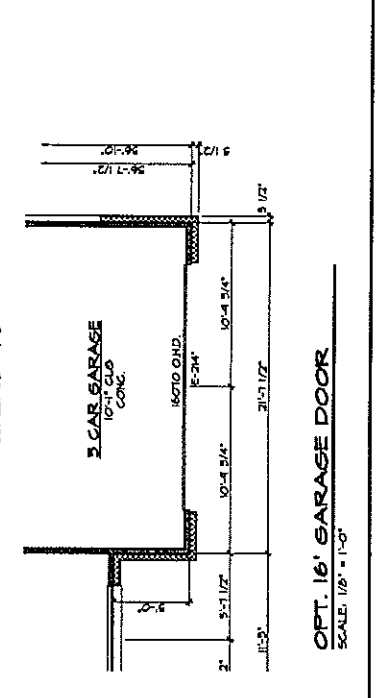
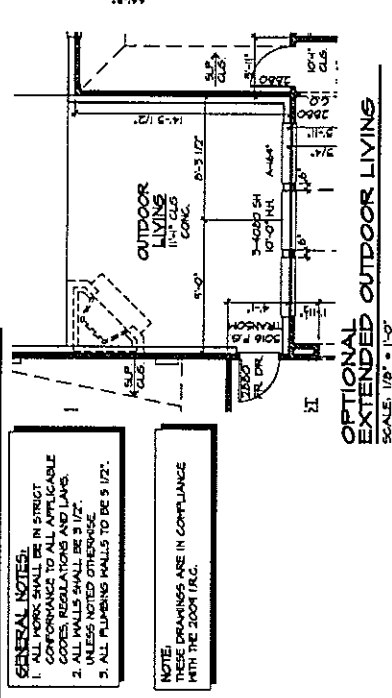
ALL WALLS UNLESS OTHERWISE NOTED SHALL BE 5/8" THICK. SEE PLAN FOR ALL WALLS TO BE 5/8" THICK. SEE PLAN FOR ALL WALLS TO BE 5/8" THICK. SEE PLAN FOR ALL WALLS TO BE 5/8" THICK.

**AREA CALCULATIONS**

DESCRIPTION	AREA (S.F.)
FIRST FLOOR	2293.5 F.
SECOND FLOOR	1163.5 F.
GARAGE	3516.5 F.
COVERED PORCH	664.5 F.
COVERED PATIO	60.5 F.
TOT. S.F.	7738.5 F.
TOTAL UNDER ROOF	4317.5 F.
OVERALL WIDTH	44'-11"
OVERALL DEPTH	37'-11"

**OPTIONS LIST**

DESCRIPTION	+ S.F.	OPT. #
1st Floor Media	216	1100-01
2nd Floor Media	216	1100-02
Master Bath	0	1250-01
Master Bed	0	1250-02
2nd Floor Media	216	1250-03
2nd Floor Media	216	1250-04
2nd Floor Media	216	1250-05
2nd Floor Media	216	1250-06
2nd Floor Media	216	1250-07
2nd Floor Media	216	1250-08
2nd Floor Media	216	1250-09
2nd Floor Media	216	1250-10
2nd Floor Media	216	1250-11
2nd Floor Media	216	1250-12
2nd Floor Media	216	1250-13
2nd Floor Media	216	1250-14
2nd Floor Media	216	1250-15
2nd Floor Media	216	1250-16
2nd Floor Media	216	1250-17
2nd Floor Media	216	1250-18
2nd Floor Media	216	1250-19
2nd Floor Media	216	1250-20
2nd Floor Media	216	1250-21
2nd Floor Media	216	1250-22
2nd Floor Media	216	1250-23
2nd Floor Media	216	1250-24
2nd Floor Media	216	1250-25
2nd Floor Media	216	1250-26
2nd Floor Media	216	1250-27
2nd Floor Media	216	1250-28
2nd Floor Media	216	1250-29
2nd Floor Media	216	1250-30
2nd Floor Media	216	1250-31
2nd Floor Media	216	1250-32
2nd Floor Media	216	1250-33
2nd Floor Media	216	1250-34
2nd Floor Media	216	1250-35
2nd Floor Media	216	1250-36
2nd Floor Media	216	1250-37
2nd Floor Media	216	1250-38
2nd Floor Media	216	1250-39
2nd Floor Media	216	1250-40
2nd Floor Media	216	1250-41
2nd Floor Media	216	1250-42
2nd Floor Media	216	1250-43
2nd Floor Media	216	1250-44
2nd Floor Media	216	1250-45
2nd Floor Media	216	1250-46
2nd Floor Media	216	1250-47
2nd Floor Media	216	1250-48
2nd Floor Media	216	1250-49
2nd Floor Media	216	1250-50



**GENERAL NOTES:**  
 1. ALL WORK SHALL BE IN STRICT ACCORDANCE WITH ALL LOCAL, STATE, AND FEDERAL CODES, REGULATIONS AND LAWS.  
 2. ALL WALLS SHALL BE 5/8" THICK UNLESS NOTED OTHERWISE.  
 3. ALL PLUMBING WALLS TO BE 5/8" THICK.

NOTE: DIMENSIONS ARE IN COMPLIANCE WITH THE 2009 IBC.

REVISIONS	No.	Date	Description	By
	11/8/13		SPECIAL 258-034	JMS

**HIGHLAND HOMES**

5601 DEMOCRACY, SUITE 300, PLANO, TEXAS 75074, (972) 788-2000

© HIGHLAND HOMES

Highland Homes reserves the right to modify or alter any portion of these drawings without notice. These drawings are not to be used for construction without the written consent of Highland Homes.

DRAWN BY: \_\_\_\_\_

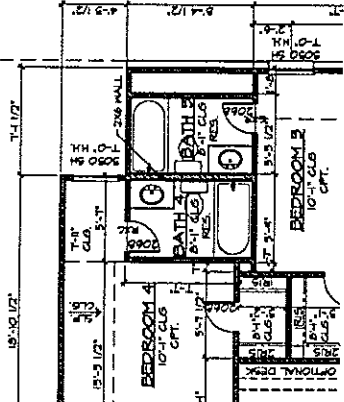
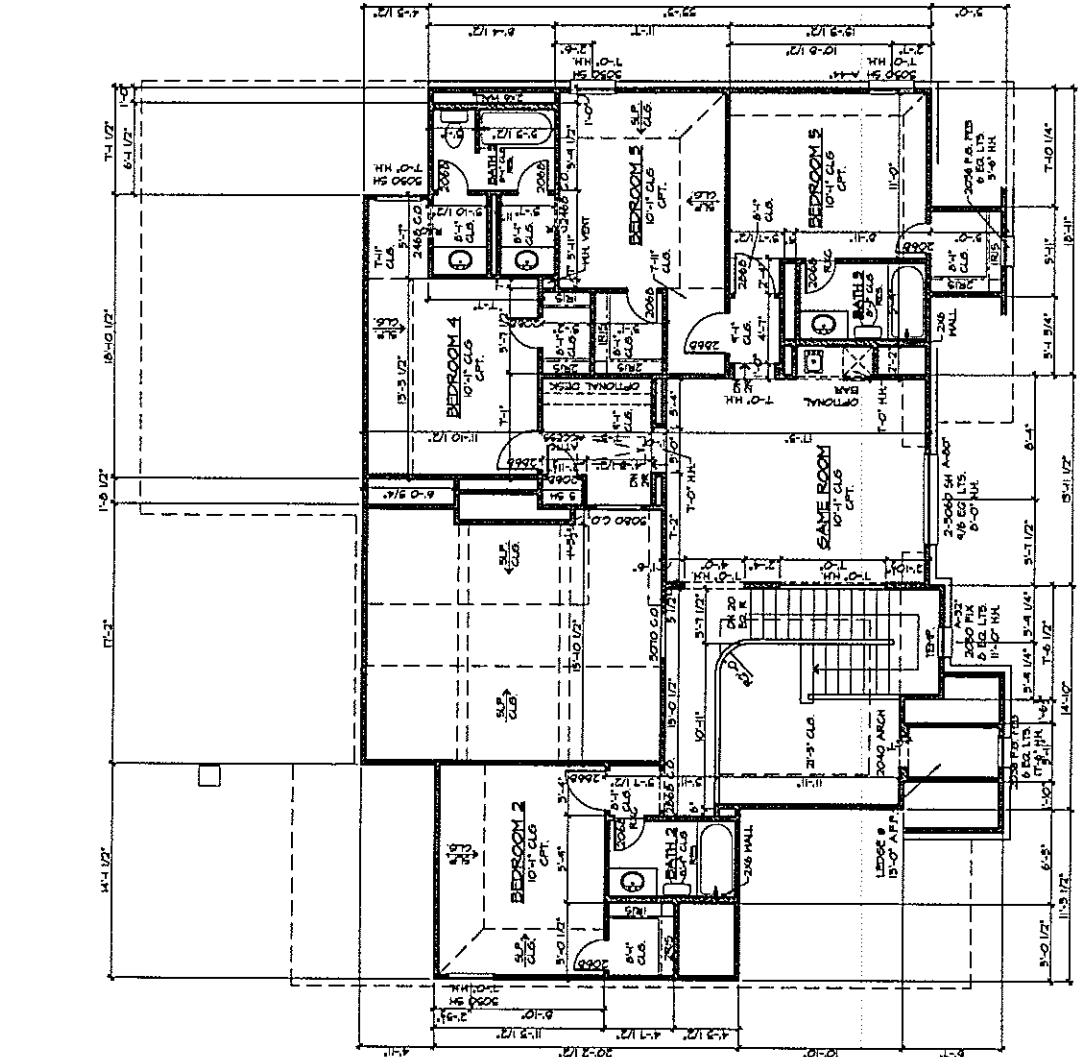
JOB: \_\_\_\_\_

SHEET: **5** OF **19**

"E" ELEV. OPTION(S) **BED 6**

PLAN NAME **283**

7481 LONGMONT COURT, JOB: 258-034



**OPTIONAL BATH 4**  
SCALE: 1/8" = 1'-0"

**SECOND FLOOR PLAN**  
SCALE: 1/8" = 1'-0"